



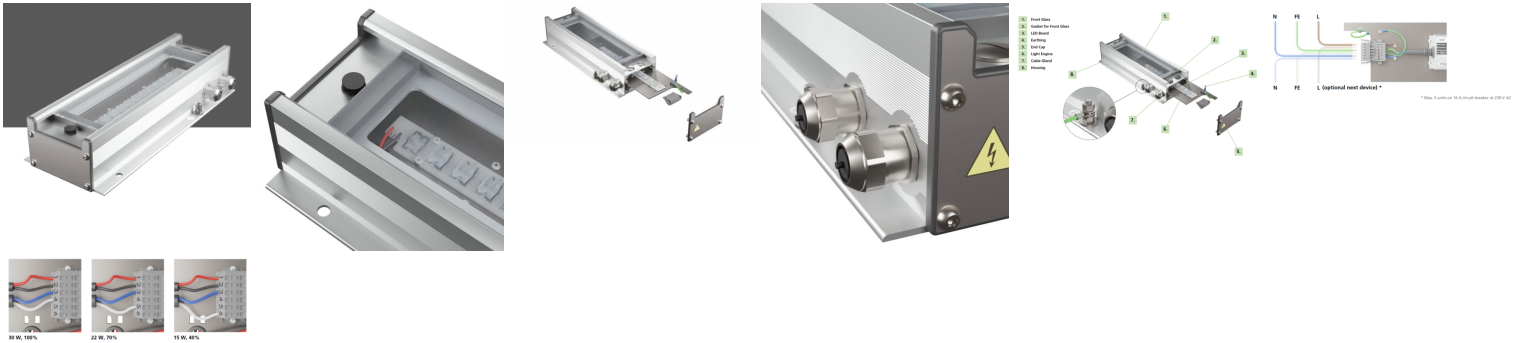
## LA40 AC



SKU: N/A

Categories: [Safety](#), [All Products](#)

## GALLERY IMAGES



## PRODUCT DESCRIPTION

### LA Series Worklight

- Heavy Duty Housing
- Low Power Consumption
- Long Life LED's
- Low Maintenance
- Fit for Offshore Use

The LA series is a highly efficient and rugged LED light fixture for harsh offshore conditions.

The versatile design with four optical variations can be used for different applications such as work & walkway lights, ID sign lights, etc.

Utilizing low power to provide high output, the LA series is rugged and low maintenance.

### Technical Data

#### DIMENSIONS & WEIGHT



Height	85 mm
Width	156 mm
Length	417 mm
Weight	2,6 kg
<b>MATERIAL</b>	
Housing / Profile	Extruded Seawater resistant anodized aluminum
End lid	Stainless steel 316 L / 1.4404
Gasket	EPDM A-KF 25-00 (25 ShA)
Glass	UV resistant clear polycarbonate
<b>ELECTRICAL CONNECTION</b>	
Type	LA40-AC
Operating Voltage	AC 200-240 V - 50/60 Hz
Power cons.	30 W
Connection	Live-L, Neu.-N, Y/G-PE
<b>ENVIRONMENTAL CONDITIONS</b>	
Ambient temperature (operation)	-25°C to 55°C
Ambient temperature (storage / transport)	-25°C to 70°C
Humidity (operation / storage / transport)	95% r.h. up to 45°C 70% r.h. for T > 45°C
Atmospheric pressure (operation / storage / transport)	80 kPa to 108 kPa
Degree of protection (acc. To IEC 60529)	IP66 & IP67
Luminaire classification (acc. to EN 60598-1:2018)	Rough service luminaire
<b>ELECTRICAL SAFETY AND HEALTH</b>	
Protection class	Class I
Overvoltage protection	Class III
Pollution degree	3
<b>RELIEABILITY</b>	
Minimum LED lifetime	100 000 h