



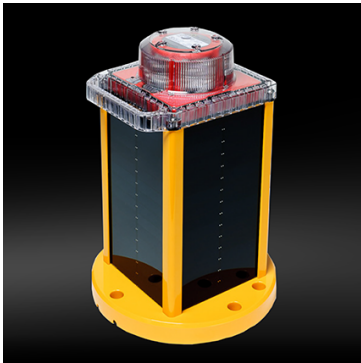
OL800



SKU: N/A

Categories: [Aviation](#), [All Products](#)

GALLERY IMAGES



PRODUCT DESCRIPTION

Self-Contained Obstruction Lights

Meets ICAO requirements for Low-Intensity Obstacle Lights Type A and Type B, according to ICAO Annex 14, Volume 1, 5th Edition, July 2009 and 6th Edition, July 2013 (Red).

Compliant with Obstruction Light Type L-810 as per FAA Advisory Circular AC 150/5345-43G 09/26/12 (Red).

Intertek compliance test reports and global simulation maps available upon request.

Intuitive Setup & Programming

- Top-mounted LED display with simple “tap to activate” functionality
- Easily check light settings without external controller
- Programmable with optional IR remote

Scalable, Cost-effective Design

- Customizable for best value-for-performance
- Multiple battery pack options



Intelligent Energy Management

- Best-in-class, high-efficiency solar panels
- Maximum Power Point Tracking (MPPT)
- Patented Energy Management System (EMS)
- Ensures maximum battery life and light performance in even the harshest of environments

Durable, Low Maintenance

- Compact, stand-alone, maintenance-free unit
- Integrated solar panels, battery, electronics and LED light source
- Replaceable battery extends life beyond five years

Trusted

- Thousands of installations worldwide
- Carmanah solar LED lights operate year-round at permanent and temporary installations

Technical Data

SPECIFICATIONS

Optical	<ul style="list-style-type: none">- High powered LEDs meet IES LM-80 lumen maintenance ensuring consistent photometrics for life of product- FAA: Meets Obstruction Light Type L-810 as per FAA Advisory Circular AC 150/5345-43G 09/26/12 (Red).- Complies with ICAO Low-Intensity Obstacle Light Type A & B - Annex 14, 5th Edition, July 2009 (Red) and 6th Edition, July 2013 (Red).- Meets requirements for CASA 10 cd (Part 139, Vol.2)- ICAO, SAE25050 (FAA) and FAA EB 67 compliant chromaticity: Red, Green, White and Yellow- Steady-on and 250+ flash patterns
Energy Collection	<ul style="list-style-type: none">- Best-in-class high-efficiency solar cells with blocking diodes- Maximum power point tracking with temperature compensation (MPPT-TC) for optimal energy collection
Energy Storage	<ul style="list-style-type: none">- EnerSys CYCLON pure-lead VRLA AGM battery -85°F to 176°F (-65°C to 80°C) manufacturers operating range- On-board battery status; Optional port for battery charging- Designed for 5 year battery life; Replaceable and recyclable
Energy Management System (EMS)	<ul style="list-style-type: none">- Intelligent, microprocessor EMS- On-board diagnostics and datalogger
Automatic Light Control (ALC)	Adjusts output intensity in response to unusually low amounts of sunlight to ensure continued operation
Programming	<ul style="list-style-type: none">- Programmable with optional infrared programmer- Integrated 4-character LED display
GPS Synchronization	Optional GPS enables two or more lights to flash in unison



	<ul style="list-style-type: none">- Premium grade UV resistant, polycarbonate lens/head- Polycarbonate/polysiloxane co-polymer base- Environmentally friendly, durable powder coated aluminum chassis (applied by trivalent chromate process)
Construction	<ul style="list-style-type: none">- Thermoplastic gaskets- Waterproof, vented battery compartment- Top colour indicator matches LED colour- Integrated handle- Bird deterrent included
Temperature	<ul style="list-style-type: none">- 22 to 122 oF (-30°C to 50°C) operating- 40 to 176 oF (-40°C to 80°C) storage
Mounting	3 or 4, 7.87" (200 mm) mounting pattern
Wind Loading	140 knots (72 m/s)
Ice Loading	0.03 psi (22 kg/m ²)
Shock & Vibration	MIL-STD-202G (for Shock and Vibration)
Ingress	<ul style="list-style-type: none">- EN 60529 IP 68 immersion- MIL - STD - 202G immersion & dam heat cycling- MIL-STD-810G rain & salt fog
Electrostatic Discharge (ESD)	FAA-STD-0193, EN61000-4-2