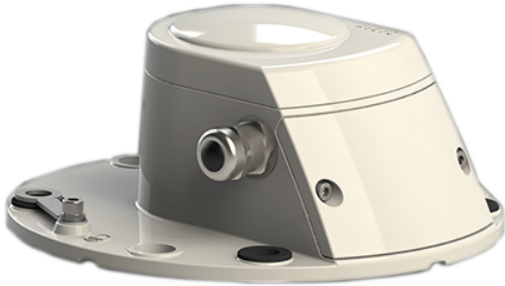




GPS UNIT



SKU: N/A

Categories: [Systems](#), [All Products](#), [ORIGINAL NAI Products](#)

GALLERY IMAGES



PRODUCT DESCRIPTION

GPS NAI

- Exact day-night switching and GPS-precise synchronisation of all flashcode generators according to IALA standard in the NAI network
- GPS/GLONASS based UTC time base
- Integrated ambient light measurement with programmable switching threshold
- NAI bus interface for power supply and communication
- More than 2 hours of holdover performance for the synchronisation

The SABIK GPS NAI is a GPS device that provides day-night information and synchronisation pulses for the flashcodes in the network of a structure marking system, based on a very precise GPS/GLONASS time base and an integrated ambient light sensor.

The day-night switching occurs depending:

- On the ambient brightness and
- The current date in conjunction with the Cuxhaven calendar (North Sea or Baltic Sea) or
- The geographic position of the device according to the astronomical clock.

The exact flashcode synchronisation of the connected navigation light components is guaranteed even in the event of a weak or absent GPS/GLONASS signal over a time period of at least 2 hours.

Technical Data



DIMENSIONS AND WEIGHT

Diameter x Height	230 mm x 101 mm
Weight	approx. 1,76 kg

ELECTRICAL CONNECTION

Electric connection	Spring terminal block, max. 2.5 mm ²
Operating voltage VIN	9 to 36 V DC
Power consumption (VIN=24 V DC - max. intensity)	400 mW

ENVIRONMENTAL CONDITIONS

Regulations	IEC 60945, device type 'exposed'
Ambient temperature (operation)	-40 °C to 55 °C
Ambient temperature (storage / transport)	-40 °C to 70 °C
Humidity (operation / storage / transport)	max. 95 % acc. to IEC 60945
Atmospheric pressure (operation / storage / transport)	80 kPa to 108 kPa
Degree of protection (acc. to IEC 60529)	IP67
Protection class	Class III

MECHANICAL REQUIREMENTS

Vibration testing sinusoidal vibrations	acc. to IEC 60945
---	-------------------

RELIABILITY

MTBF Electronics	1 320 000 h
------------------	-------------

MATERIAL

Housing (device foot, cover for socket)	Anodised, powder-coated aluminium (ALSi)
Housing head	ABS/PC
Cable gland	Nickel-plated brass
Earthing connection	Nickel-plated brass
Cover indicator LED	MAKROLON® (PC)
Insulation sleeves	PA
Seals	TPE, injection-molded
Pressure compensation valve for socket and housing	PTFE membrane